

ZOOMLION

TELEHANDLER ZTH4014/ZTH4018

FEATURES

Standard

- ▶ Horn
- ▶ Reversing buzzer
- ▶ Flashing beacon
- ▶ Electro-hydraulic proportional control
- ▶ Emergency stop system
- ▶ Work light
- ▶ 10.1in color display
- ▶ Automatic leveling fork
- ▶ Frame leveling
- ▶ Inching (hydrostatic only)
- ▶ Moment limiting system
- ▶ Heating and cooling air condition
- ▶ RAS system
- ▶ RAS:Rear Axle Stabilization
- ▶ Fault diagnosis
- ▶ USB port
- ▶ Bluetooth
- ▶ Radio
- ▶ Auxiliary power
- ▶ Door monitoring system
- ▶ Seat occupied monitoring system
- ▶ Remote screen projection

Option

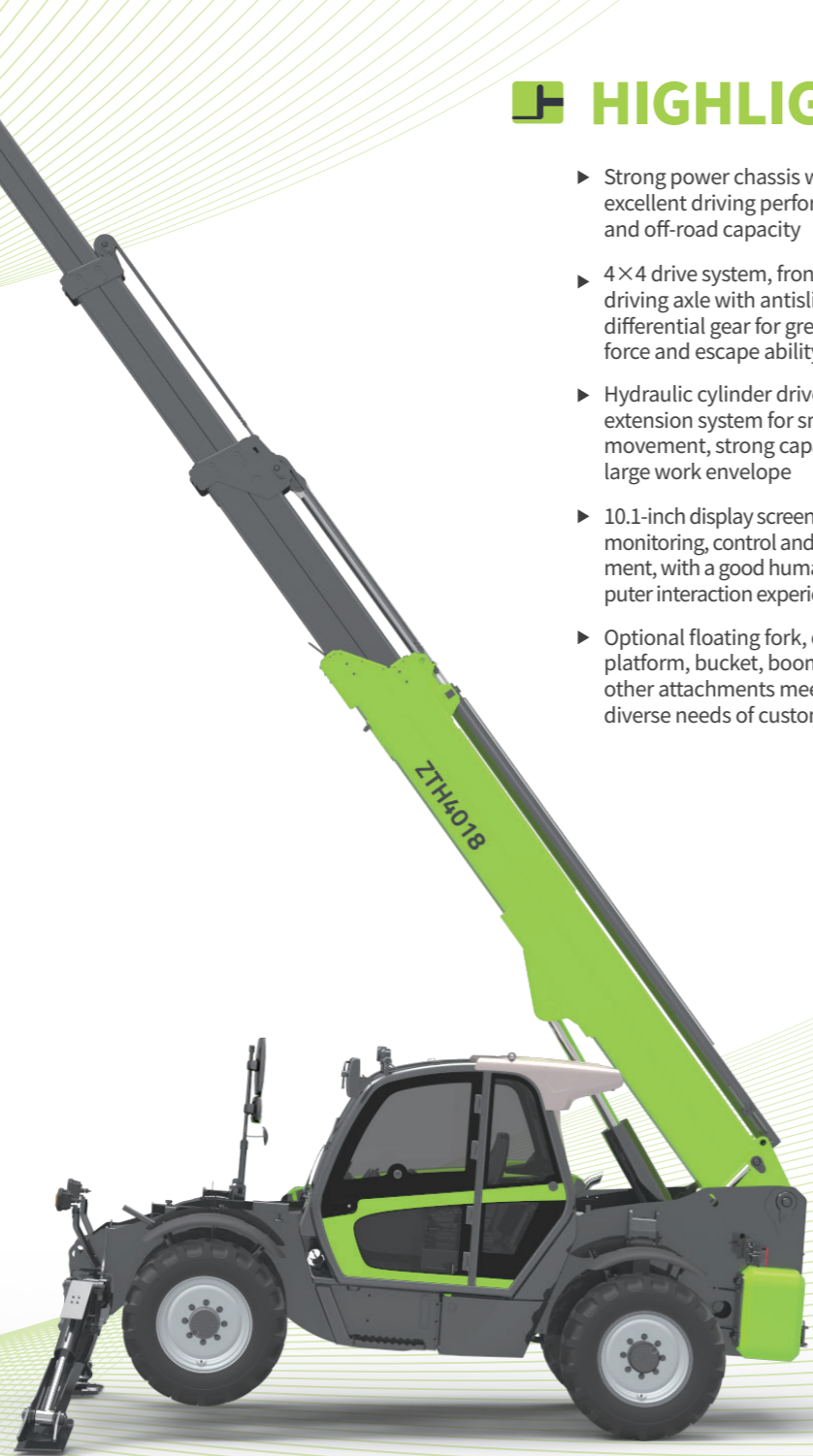
- ▶ Quick connect hydraulic bolt function
- ▶ Click-to-retract
- ▶ XY axis action
- ▶ Position memory
- ▶ Remote control
- ▶ Cold start pack

Optional attachments

- ▶ Floating fork
- ▶ Bucket
- ▶ Square Bale Forks
- ▶ Wrapped Bale Clamp
- ▶ Rotating Platform
- ▶ Frame Mounted Hook

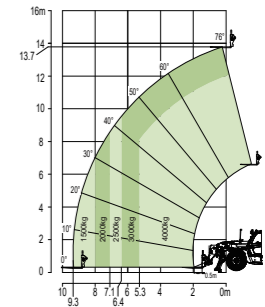
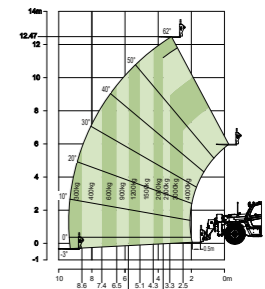
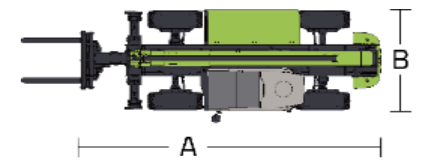
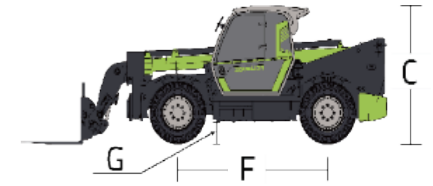
HIGHLIGHTS

- ▶ Strong power chassis with excellent driving performance and off-road capacity
- ▶ 4×4 drive system, front and rear driving axle with antislip differential gear for great traction force and escape ability
- ▶ Hydraulic cylinder driven extension system for smooth movement, strong capacity and large work envelope
- ▶ 10.1-inch display screen integrates monitoring, control and entertainment, with a good human-computer interaction experience
- ▶ Optional floating fork, optional platform, bucket, boom and other attachments meet the diverse needs of customers

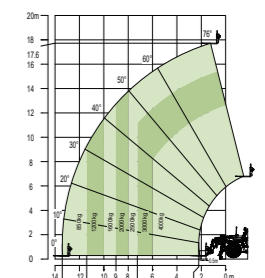
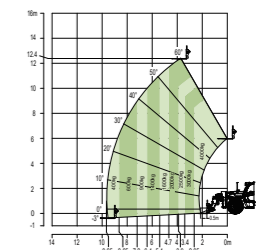


ZOOMLION

Model	ZTH4014		ZTH4018	
	Metric	Imperial	Metric	Imperial
Size				
A Overall length	6.31m	20ft 8in	6.48m	21ft 3in
B Overall width	2.28m	7ft 6in	2.28m	7ft 6in
C Overall height	2.57m	8ft 5in	2.57m	8ft 5in
F Wheelbase	3.07m	10ft 1in	3.07m	10ft 1in
G Min ground clearance	0.42m	1ft 5in	0.42m	1ft 5in
Performance				
Rated capacity	4000kg	8818lb	4000kg	8818lb
Max lift height	13.8m	45ft 3in	17.6m	57ft 9in
Lift capacity at max height	3000kg	6614lb	2500kg	5511lb
Max forward reach	9.3	30ft 6in	13.13m	43ft 1in
Lift capacity at max reach	1200kg	2646lb	850kg	1873lb
Weight	11800kg	26014lb	12700KG	27998lb
Max traction force	72kN	16186lbf	71kN	15961lbf
Frame leveling angle	±10°		±10°	
Turning radius - outside	3.8m	12'6"	3.8m	12'6"
Power				
Engine	Cummins QSF 3.8/Cummins F3.8		Cummins QSF 3.8/Cummins F3.8	
Rated power	73/55kW	98/74HP	73/55kW	98/74HP
Max torque	420/400Nm	310/295lb*ft	420/400Nm	310/295lb*ft
Cylinder	4		4	
Displacement	3760ml	0.99gal	3760ml	0.99gal
Transmission	Hydrostatic		Hydraulic	
Max drive speed	30/25km/h	18.64/15.5mph	30/25km/h	18.64/15.5mph
Steering	Front wheels/4WS/Crab		Front wheels/4WS/Crab	
Tire				
Type	400/80R24		400/80R24	
Hydraulic				
Implement pump	Piston pump		Piston pump	
Hydraulic flow - pressure	135L/min 280bar	35.66gal/min 280bar	150L/min 280bar	39.63gal/min 280bar
Tank				
Hydraulic tank capacity	145L	38.3gal	145L	38.3gal
Fuel tank capacity	145L	38.3gal	145L	38.3gal
Fork				
Fork size	1220mm× 122mm×50mm	4ft×4.8in× 1.968in	1220mm× 122mm×50mm	4ft×4.8in× 1.968in
Fork rotary	126°		126°	
Working speed				
Boom up/down	17.5/13s		17/13s	
Boom extend/retract	16.5/15s		17/17s	
Fork lift	5s		5s	
Fork retract	5s		5s	



Range of Motion ZTH4014



Range of Motion ZTH4018

ACCESS WITH ZOOMLION GREEN

Phone: 0086(731)-88353692
E-mail: awp@zoomlion.com

Add: 701 Xulong Nan Lu, Xiangjiang New District, Changsha Hunan, China
Web: www.zoomlion-access.com

ZOOMLION ACCESS reserves the right to make specification and/or equipment changes without prior notification. Product specifications are updated to January, 2025.